



Getting Started with ARGWEB

ARGWEB – Getting Started

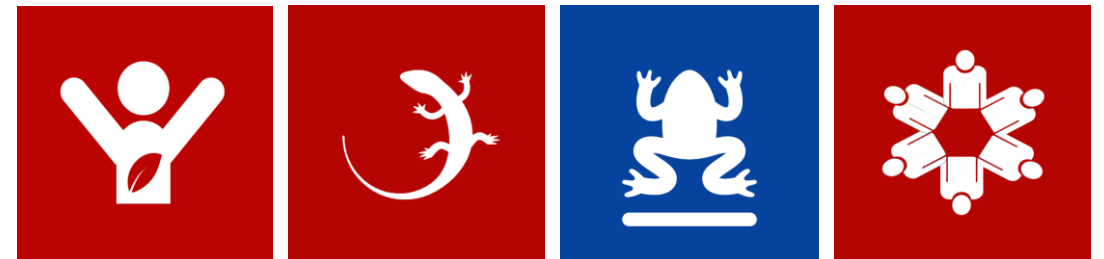


ARGWEB has many capabilities, developed over 15 years of running an ARG. Many of the administrative tasks have been coded into the software with the goal of making the most of the ARG managers' available time, to focus on conservation effects.

Few ARGs use all of the capabilities available, many just use the sections which apply most to their particular model of an ARG, but allows them to expand what they do in time.

Some of the most popular uses are listed below, with a cheat sheet on subsequent pages:

1. Managing membership and subscriptions
2. Having a strategic view of species distributions
3. Setting up reptile survey transects
4. Creating a ponds database
5. Toad Crossings
6. Sharing data with partners you select



ARGWEB – Membership



ARGWEB is designed to make the process of managing membership subscriptions completely automatic when combined with PayPal subscriptions, but can be operated manually. There is a guide on integrating ARGWEB with PayPal.

Membership has three levels of access permissions:

1. **Member** – this access can be further enhanced by providing surveyor permissions and licences held through the members' database.
2. **Committee** – This allows access to committee tools such as county-wide detailed distribution maps, the ability to set up reptile transects and to interact with your volunteers.
3. **Admin** – Has committee access, plus access to members' personal details with a mind to managing your membership.

The Members Database can be found, from the members' area by clicking...



Committee
Tools



Members
Database

Clicking a members' name brings up that member's details. You can add a new member from the button at the bottom of the page.

The database is GDPR compliant, ARG insurance compliant (managing the Volunteer Workers Agreement) and can manage your members' volunteering preferences

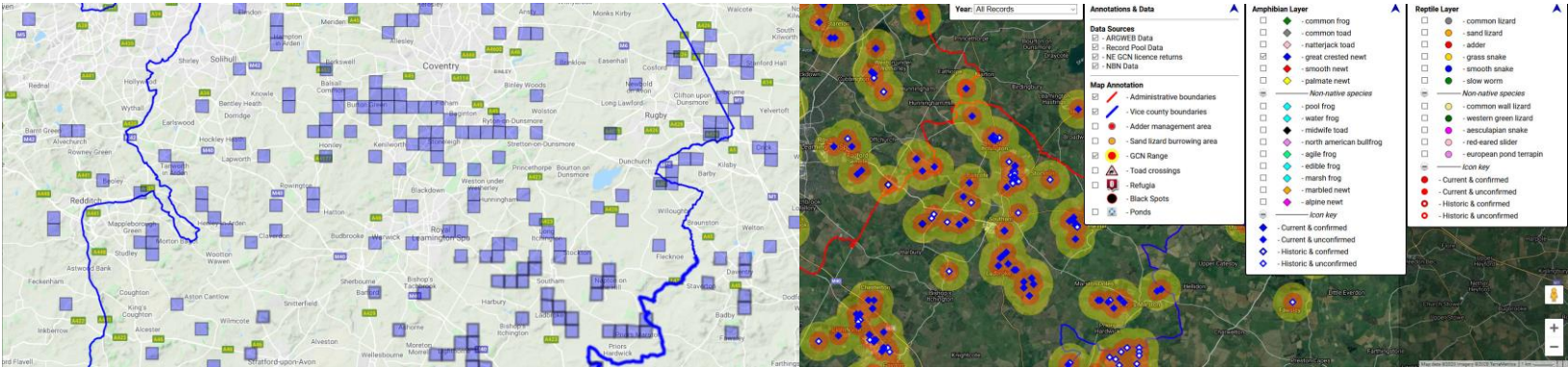
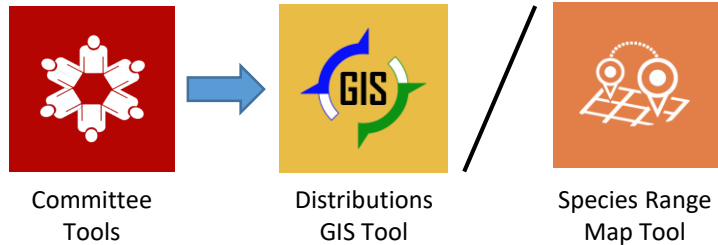
ARGWEB – Mapping



ARGWEB is designed to be a one-stop shop for records, fusing local datasets with iRecord, Record Pool, various NBN Atlas datasets and Licence returns from the Countryside Agencies.

The mapping can show analysis overlays, such as sensitive management areas for adder, and great crested newt ranges and meta-populations. Toad crossings, ponds and refugia can all be displayed on interactive maps. Snapshots of any year or range of years can be shown.

The iconography set used is the standard herpetological icon set developed by SARG and ARC. These show the difference between current and historic records, and between confirmed and unconfirmed records. Range maps can be generated in real time, saving the need or delay for expert GIS mappers.

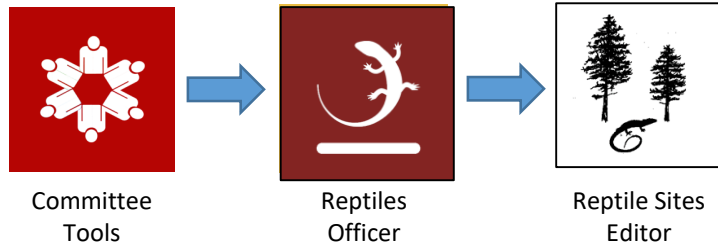


ARGWEB – Reptile Survey



ARGWEB has different types of reptile survey, however the most usual is a refugia survey, where tins are laid out in a transect, and surveyors are trained to check the tins and the habitat between tins. ARGWEB has apps which let you plan and set up a reptile transect.

When you 'Publish' a site, any of your surveyors can access the details they need to survey, including tin locations in a handy GPX file format. They can upload results to create a real time reporting system.



16 Active Refugia Zoom: 17

LPC-001 LPC-002 LPC-003 LPC-004 LPC-005 LPC-006 LPC-007
 LPC-008 LPC-009 LPC-010 **LPC-011** LPC-012 LPC-013 LPC-014
 LPC-015 LPC-016

Click on a tin button to edit location and details

Aim for a tin density of just one tin per hectare. A hectare grid can be shown by clicking the button on the bottom menu.

Refugia number: LPC-011 Change no. to: 011

Material: Corrugated Iron

OSGB: SU9085545418 Show

Laid by: Jamel Guenioui & Steve Langham

Date laid: 2011-04-02 00:00:00

Notes:

Active: - Exists in survey plan

Present: - (Missing tins)

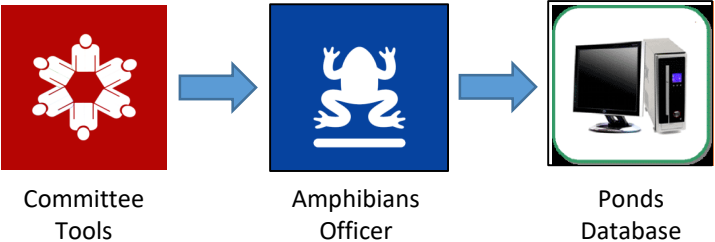
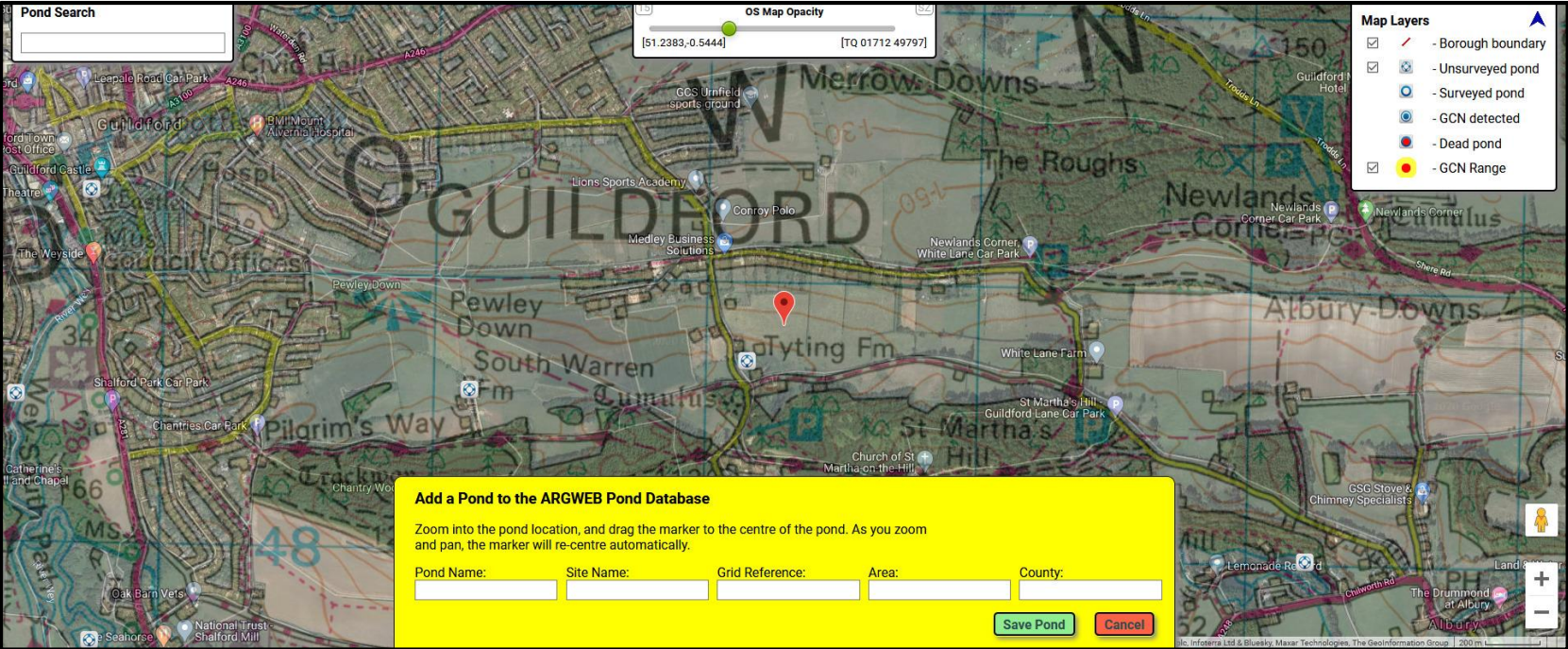


ARGWEB – Ponds Database



ARGWEB lets you create a ponds database. The Ponds App lets you see your area in a variety of map formats, from OSGB, Road, Terrain and Aerial views. By clicking on a location, you can add a pond to the database.

All ponds are integrated into the Amphibian Survey parts of the software, which allow for easy HIS calculation and support a variety of survey types including torching, netting, egg searches, bottle trapping and eDNA.



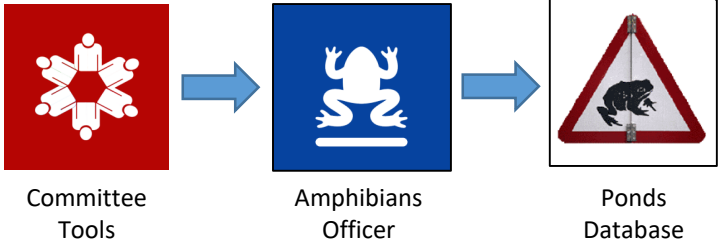
ARGWEB – Toad Crossings



ARGWEB allows you to record the toad crossings in your area, with points of contact to help resource and coordinate effort. Everybody sees the same data, so there is no need for updating and emailing spreadsheet files.

The online reporting not only gathers records for all crossing sites, but automatically appends the weather conditions and even astronomical data such as moon phase. This data will shortly be turned into a toad crossing early reporting system, which aims to predict periods of peak activity.

A new dashboard for each crossing is in beta testing, which will show historical data, estimated total numbers, activity levels and a risk estimate based on traffic flow data, highlighting the most important times to attend the crossing.



SARG Toad Crossing Editor

Search:

SiteName	OSGBLGR	Town	District	Activity	Sign_Warden	Rescue_Warden	Contact_Email	Del
Abinger Road	TQ1498043914	Coldharbour		High				✖
Balchins Lane	TQ135485	Westcott	Mole Valley	Low				✖
Benner Lane	SU949612	West End 2	Surrey Heath	Unknown				✖
Boundary Road	SU8208941993	Batts Corner	Waverley	Medium				✖

ARGWEB – Data Sharing



Whenever you set up a reptile or amphibian survey site, you can record site stakeholders, such as the owners, managers or other interested parties.

ARGWEB allows you to create data portals for these stakeholders, passing on survey information to them in real time.

This feature can be especially useful for reptile sites, to inform managers of distributions and likely hibernacula locations. ARGWEB can analyse survey data to provide fitness reports, and areas for sensitive management based on the seasonal profile of the sightings.

This simple capability has repeatedly saved animals' lives, across multiple sites.

